

1 GENERAL PLANTING SITE PLAN
1"= 32'-0"

Scientific Name	Common Name	Size	Quantity
<i>Cornus nuttallii</i>	Pacific Dogwood	3" cal	8
<i>Chamaecyparis obtusa</i> 'Gracilis'	Slender Hinoki Cypress	3" cal	2
<i>Prunus serrulata</i> 'Amanogawa'	Amanogawa Flowering Cherry	3" cal	15
<i>Ginkgo biloba</i> 'Princeton Sentry'	Princeton Sentry Ginkgo		2
<i>Liquidambar styraciflua</i>	Sweetgum		3
<i>Pinus contorta</i> var. <i>Chief Joseph</i>	Chief Joseph Pine	10 gal	6
<i>Ceanothus sanguineus</i>	Red Stem Ceanothus	5 gal	7
<i>Cornus sericea</i>	Red Osier Dogwood	5 gal	9
<i>Gaultheria shallon</i>	Salal	3 gal	41
<i>Hosta</i> "Guacamole"	Hosta		13
<i>Lupinus litooralis</i>	Broadleaf Lupine	3 gal	18
<i>Mahonia</i> (<i>Berberis</i>) <i>aquifolium</i>	Tall Oregon grape	5 gal	20
<i>Nandina domestica</i>	Heavenly Bamboo	5 gal	20
<i>Ribes sanguineum</i>	Flowering Currant	5 gal	8
<i>Rosa nutkana</i>	Nootka Rose	5 gal	18
<i>Pinus mugo</i> 'Tannenbaum' or <i>Jakobsen</i>	Mugo Pine	5 gal	3
<i>Polystichum munitum</i>	Sword fern	3 gal	17
<i>Sarcococca hookeriana</i> var. <i>humilis</i>	Sweet Box		31
<i>Armeria maritima</i>	Thrif/Sea Pink		230 SF
<i>Arctostaphylos uva-ursi</i>	Kinnikinnik	12"x12"	480 SF
<i>Daphne odora</i> 'Aureo-marginata'	Winter Daphne		250 SF
<i>Deschampsia cespitosa</i>	Tufted Hairgrass	12"x12"	150 SF

2 PLANTING SCHEDULE

NOTES:

- CONTRACTOR SHALL ARRANGE TO MEET ON SITE WITH THE PROJECT REP TO DISCUSS LIMITS OF WORK AND METHODS. CONSTRUCTION ACTIVITIES SHALL NOT COMMENCE UNTIL ACCESS, LIMITS OF WORK, AND METHODS ARE APPROVED. ALL SAFETY FENCING AND TESC MEASURES MUST BE INSTALLED PRIOR TO COMMENCING CONSTRUCTION ACTIVITIES.
- ALL PLANTS TO BE SAVED AND PROTECTED WITHIN PLANTING AREAS WILL BE FLAGGED BY ENGINEER. NOTIFY ENGINEER FIVE (5) DAYS PRIOR TO START OF CLEARING ACTIVITY.
- MITIGATION PLANTING PLANS REPRESENT A CONCEPTUAL PLANT LAYOUT. FINAL PLANT LOCATIONS SHALL BE APPROVED BY PROJECT REP PRIOR TO PLANTING. COORDINATE DATA WILL BE PROVIDED ELECTRONICALLY FOR LOCATION OF PLANTING AREA BOUNDARIES.
- ALL PLANTS SHALL BE NURSERY GROWN A MINIMUM OF ONE YEAR, PLANT MATERIAL IS TO BE SUPPLIED BY COMMERCIAL NURSERIES. PLANT SUBSTITUTIONS ARE SUBJECT TO APPROVAL BY PROJECT REP.
- MITIGATION PLANTING SHALL TAKE PLACE DURING THE DORMANT SEASON (OCTOBER 1ST TO MARCH 1ST). PLANTING MAY BE ALLOWED AT OTHER TIMES AFTER REVIEW AND WRITTEN APPROVAL BY PROJECT REP.
- THE CONTRACTOR SHALL BE RESPONSIBLE FOR DISPOSING OF ALL DEBRIS AND EXCESS SOIL OCCASIONED BY THIS PROJECT.
- CONTRACTOR SHALL VERIFY THE LOCATION OF ALL UTILITIES PRIOR TO EXCAVATION.
- ALL DIMENSIONS FOR LISTED HEIGHT, LENGTH, AND CONTAINER SIZE ARE MINIMUM REQUIREMENTS.
- EXISTING AREAS DISTURBED BY CONSTRUCTION ACTIVITIES AND NOT SHOWN TO BE RE-VEGETATED ON THESE PLANS SHALL BE RESTORED AND SEEDED.
- DISCREPANCIES BETWEEN THE PLANS AND SITE CONDITIONS SHALL BE BROUGHT TO THE ATTENTION OF THE PROJECT REP PRIOR TO PROCEEDING WITH EFFECTED WORK.
- SEE SP SHEETS FOR TEMPORARY EROSION CONTROL MEASURES.
- CONTRACTOR SHALL BE RESPONSIBLE FOR WATERING PLANTS FOR THE FIRST YEAR AFTER ACCEPTANCE OF COMPLETION OF PLANTING FOR THE PROJECT. COUNTY WILL MAKE PROVISIONS FOR WATERING AS NEEDED FOR THE REMAINDER OF THE ESTABLISHMENT PERIOD AFTER THE FIRST YEAR.
- CONTRACTOR SHALL REMOVE ALL TREE STAKES AT THE END OF ONE (1) YEAR.

TEMPORARY IRRIGATION NOTES:

- VERIFY LOCATION OF EXISTING UTILITIES PRIOR TO CONSTRUCTION.
- ALL WORK SHALL BE IN ACCORDANCE WITH SPECIFICATIONS SECTION 8-03 "IRRIGATION SYSTEMS".
- CONTRACTOR SHALL PROTECT ALL EXISTING IMPROVEMENTS. DAMAGE TO THE EXISTING IMPROVEMENTS SHALL BE REPAIRED OR REPLACED TO THE SOLE SATISFACTION OF THE OWNER AT NO COST.
- CONTRACTOR SHALL BE RESPONSIBLE FOR PROVIDING A SCALED IRRIGATION PLAN AND APPLICABLE CONSTRUCTION DETAILS WHICH GRAPHICALLY IDENTIFIES THE LOCATION, SIZES, AND TYPES OF IRRIGATION EQUIPMENT PROPOSED FOR REVIEW AND APPROVAL BY OWNER'S REP. CONTRACTOR SHALL ALSO FIELD VERIFY STATIC PRESSURE PRIOR TO DESIGN PREPARATION.
- ALL WORK SHALL BE IN COMPLIANCE WITH STATE AND LOCAL CODES.
- LOCATE ALL VALVES WITHIN ONE (1) FOOT OF THE MAINLINE.
- FIELD VERIFY ALL SPRINKLER HEAD LOCATIONS (FLAGGING) FOR REVIEW AND APPROVAL BY OWNER'S REP BEFORE TRENCHING.

DESIGNED: MM/YY
DRAWN:
CHECKED:

PORT OF EDMONDS
NORTH PORTWALK AND SEAWALL RECONSTRUCTION
336 Admiral Way, Edmonds, Washington

DRAWING TITLE
PLANTING SITE PLAN & SCHEDULE

NOTE: SCALES SHOWN ARE FOR 24"x36" SHEETS

MAKERS
architecture • planning • urban design

ADDRESS: 500 UNION ST., SUITE 700
SEATTLE, WA 98101
TEL: (206) 652-5080
FAX: (206) 652-5079

2/9/23

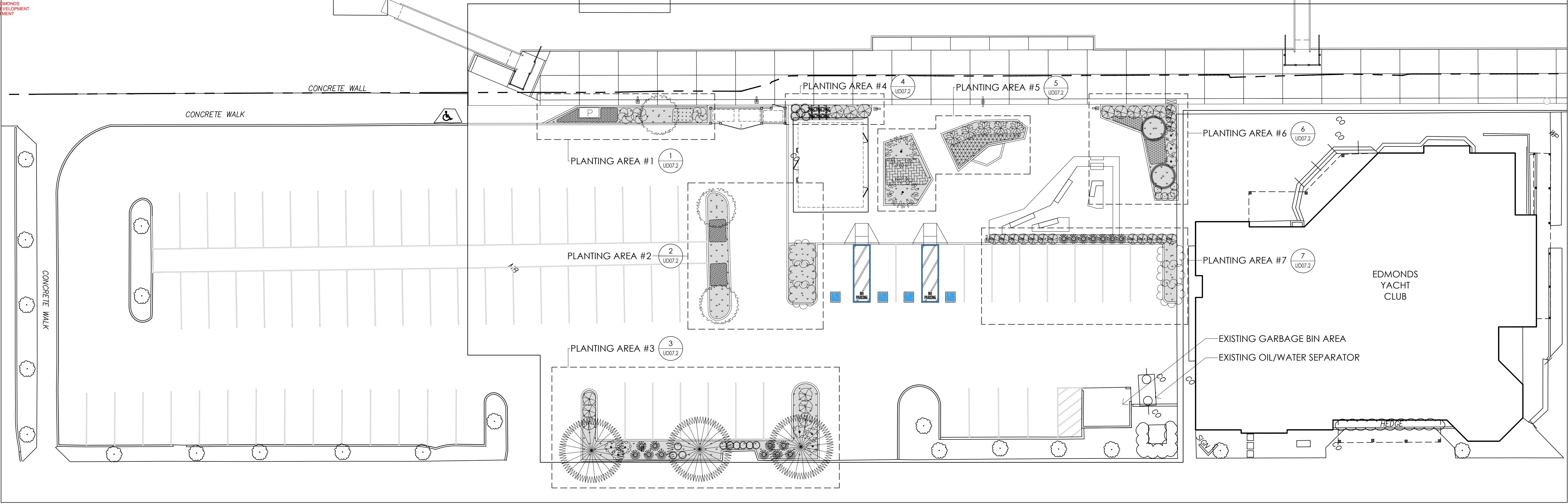
REVISIONS
DESCRIPTION
DATE

APPROVED

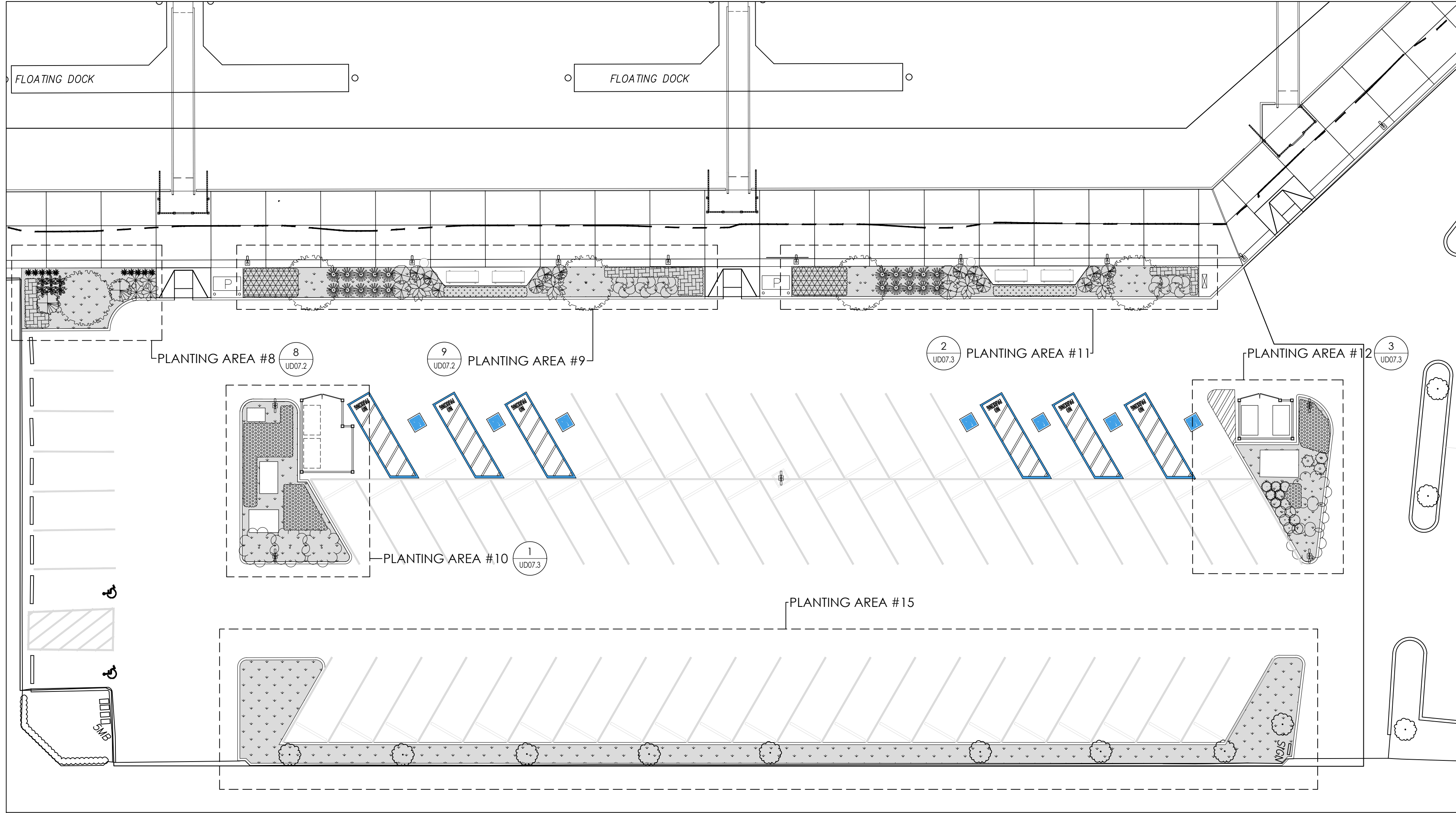
Project No.
2045

Drawing No.
UD07.0

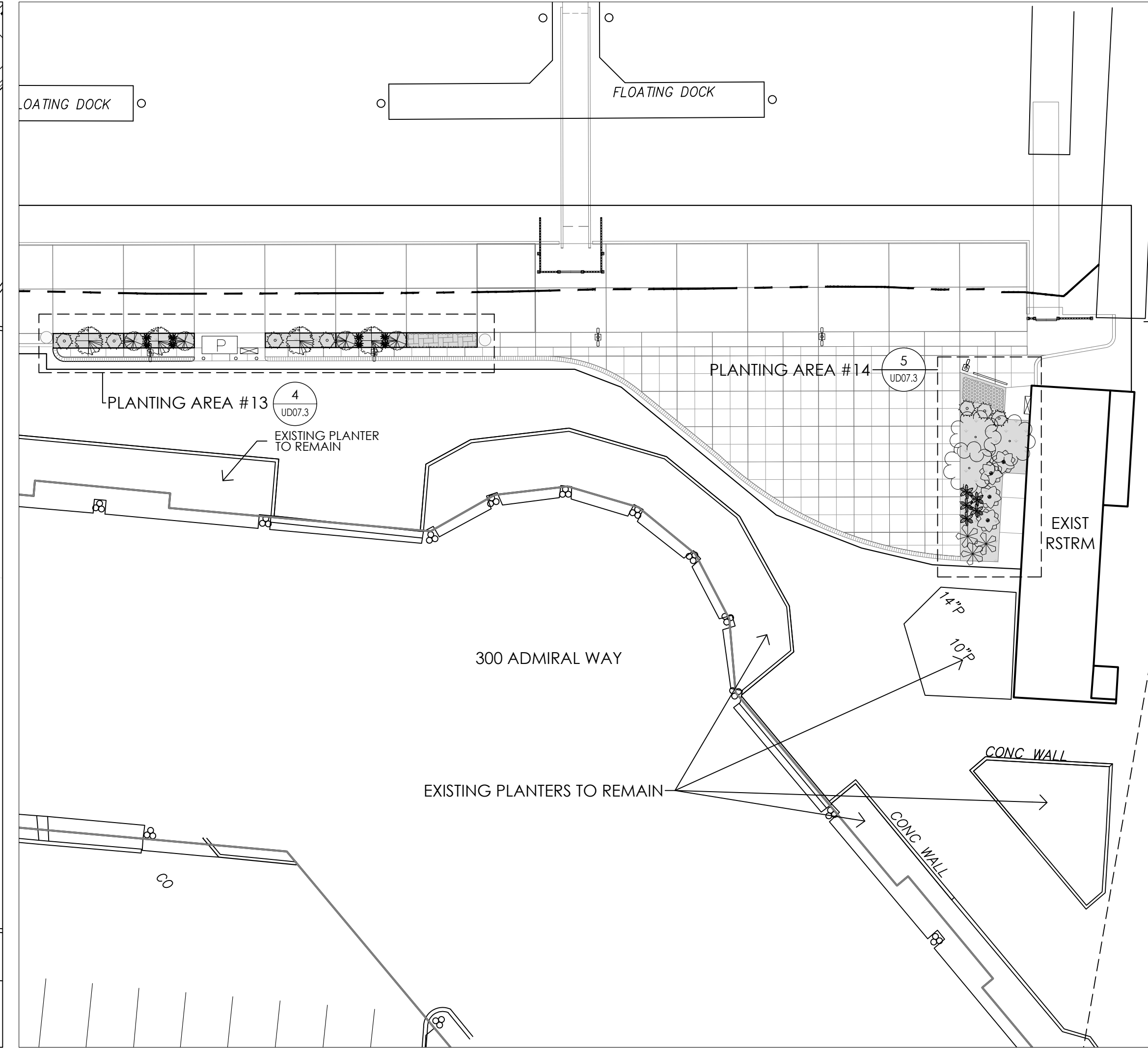
Sheet of



1 UPPER PLAZA - PLANTING SITE PLAN
1"= 16'-0"

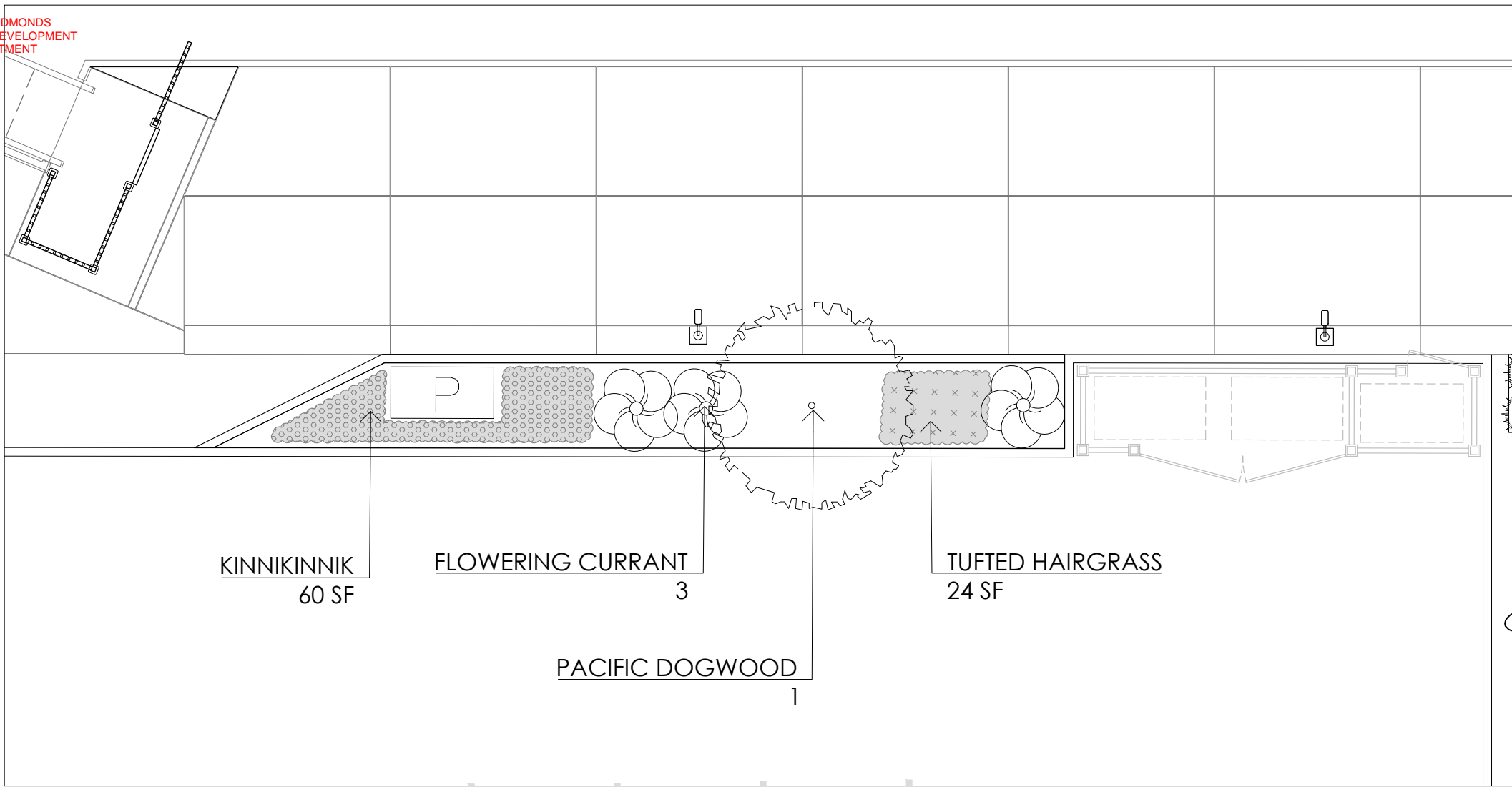


2 CENTRAL PLAZA PLANTING SITE PLAN
1"= 16'-0"

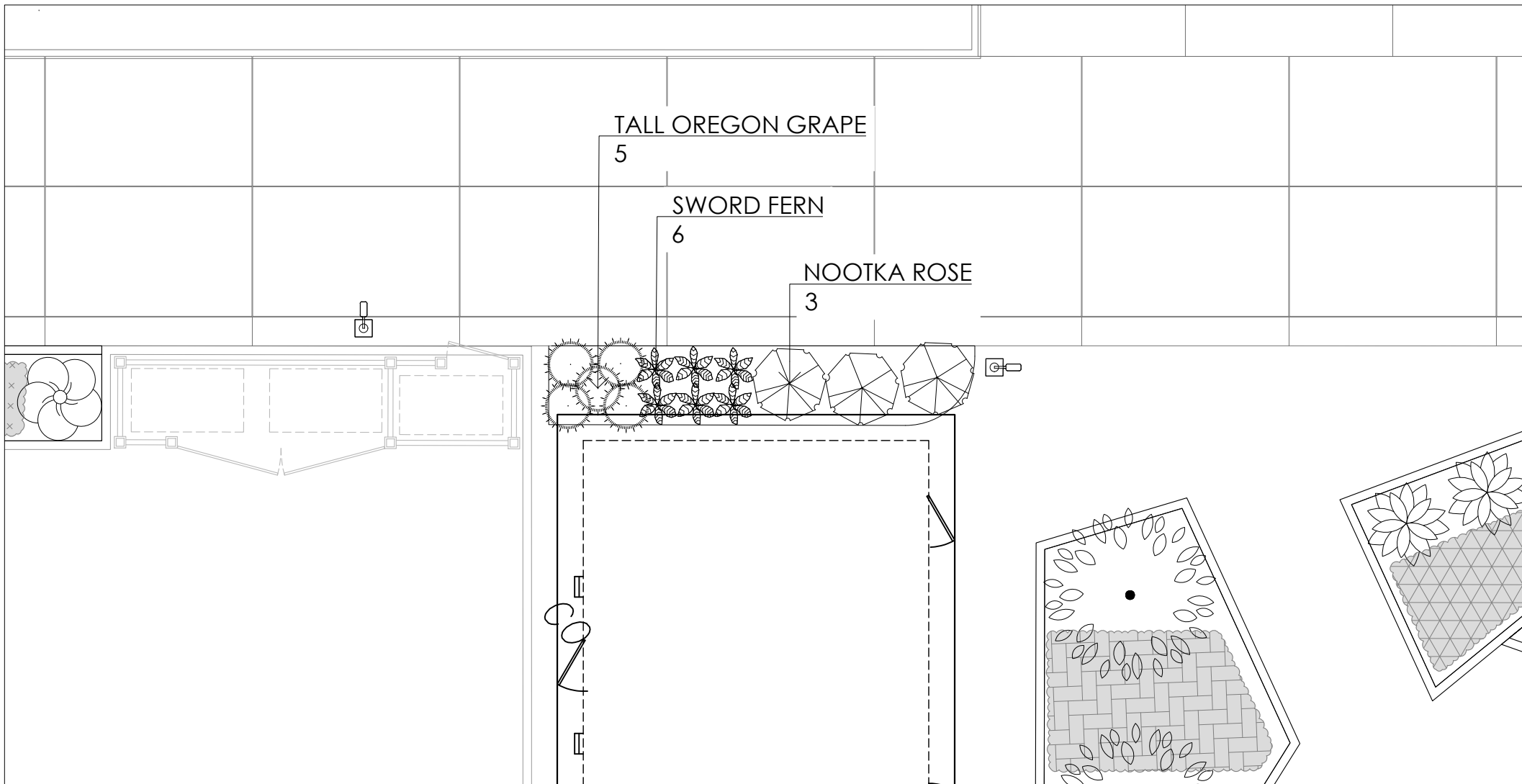


3 NORTH PARKING LOT IMPROVEMENTS PLAN
1/16"= 1'-0"

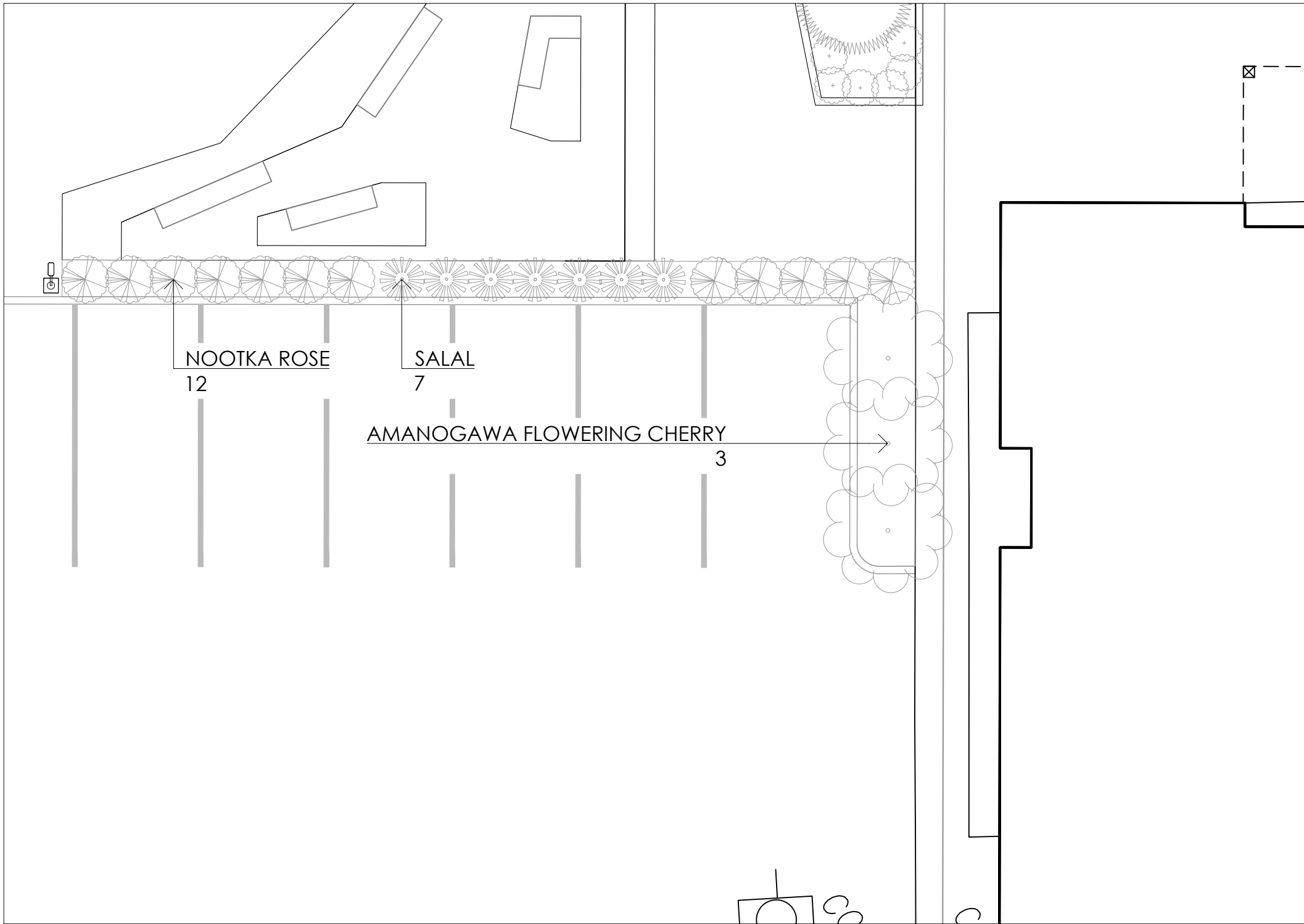
Project No. 2045		REVISIONS		APPROVED	2/9/23	ADDRESS: 500 UNION ST. SUITE 700 SEATTLE, WA 98101 TEL: (206) 652-5080 FAX: (206) 652-5079	MAKERS architecture • planning • urban design	PORT OF EDMONDS NORTH PORTWALK AND SEAWALL RECONSTRUCTION 336 Admiral Way, Edmonds, Washington	DESIGNED: MM/YY			
		DESCRIPTION							DRAWN:			
Drawing No. UD07.1						DRAWING TITLE ENLARGED CENTRAL & UPPER PLAZA PLANTING PLANS				CHECKED:		
Sheet of						NOTE: SCALES SHOWN ARE FOR 24"X36" SHEETS						



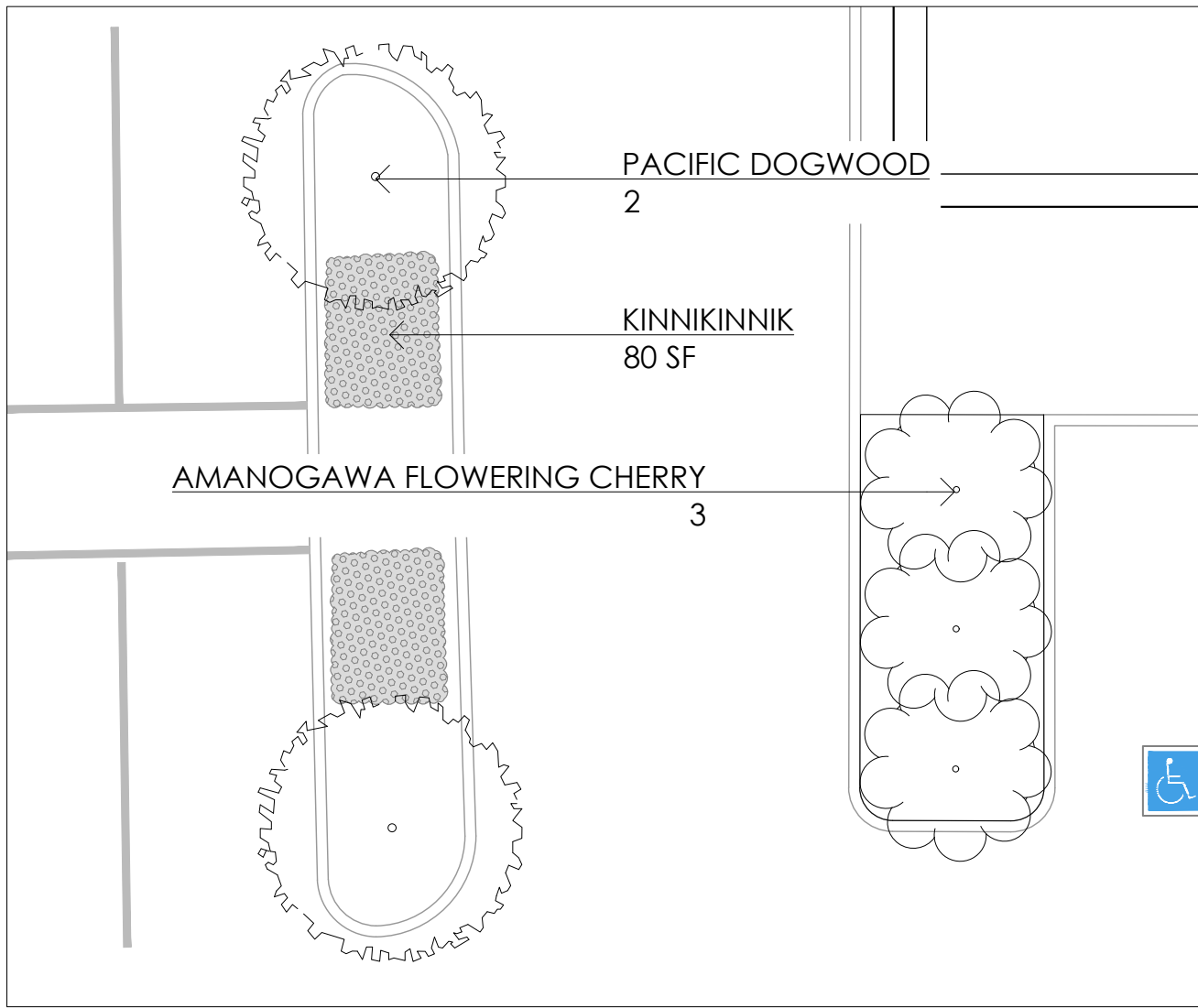
1 PLANTING AREA #1
1/8" = 1'-0"



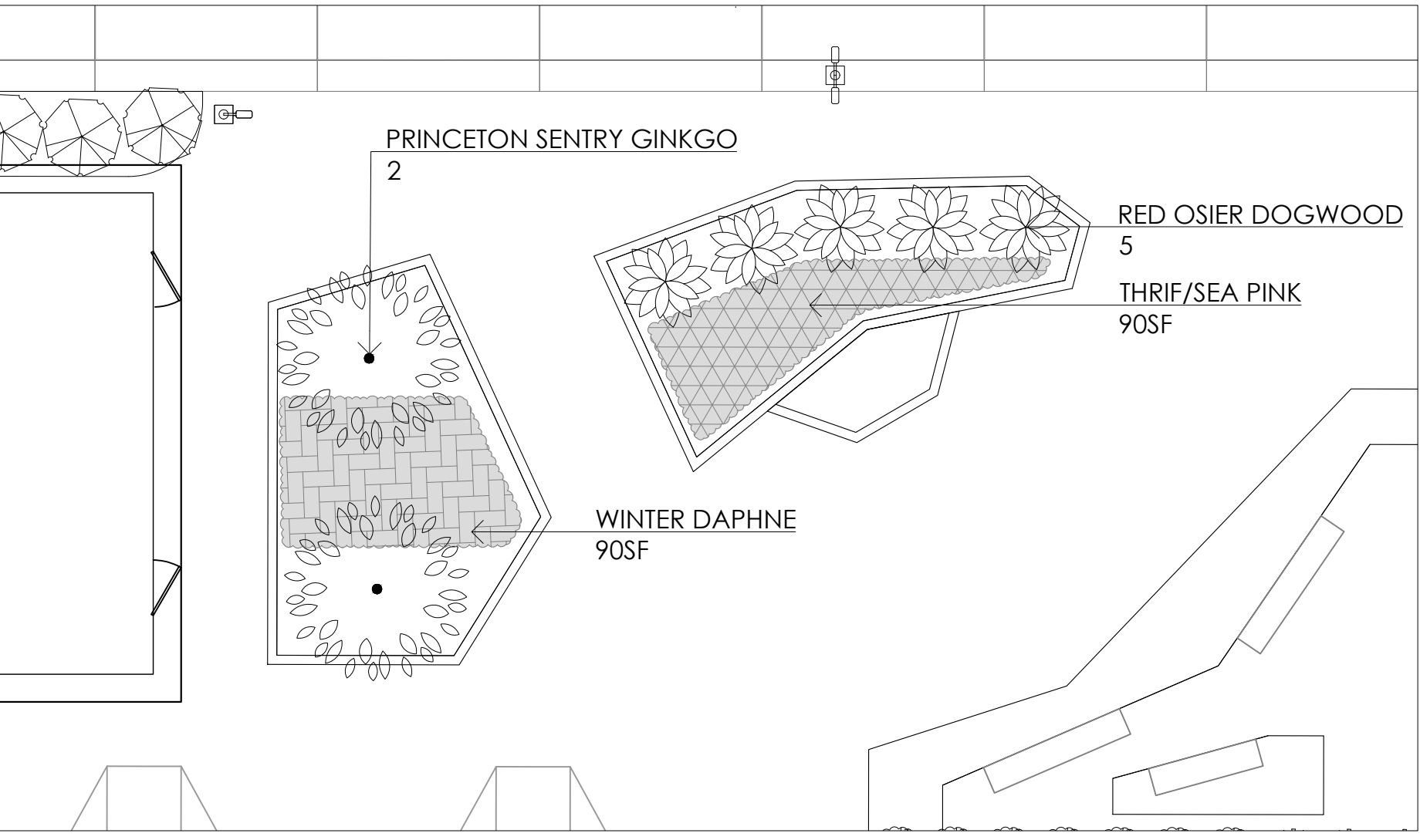
4 PLANTING AREA #4
1/8" = 1'-0"



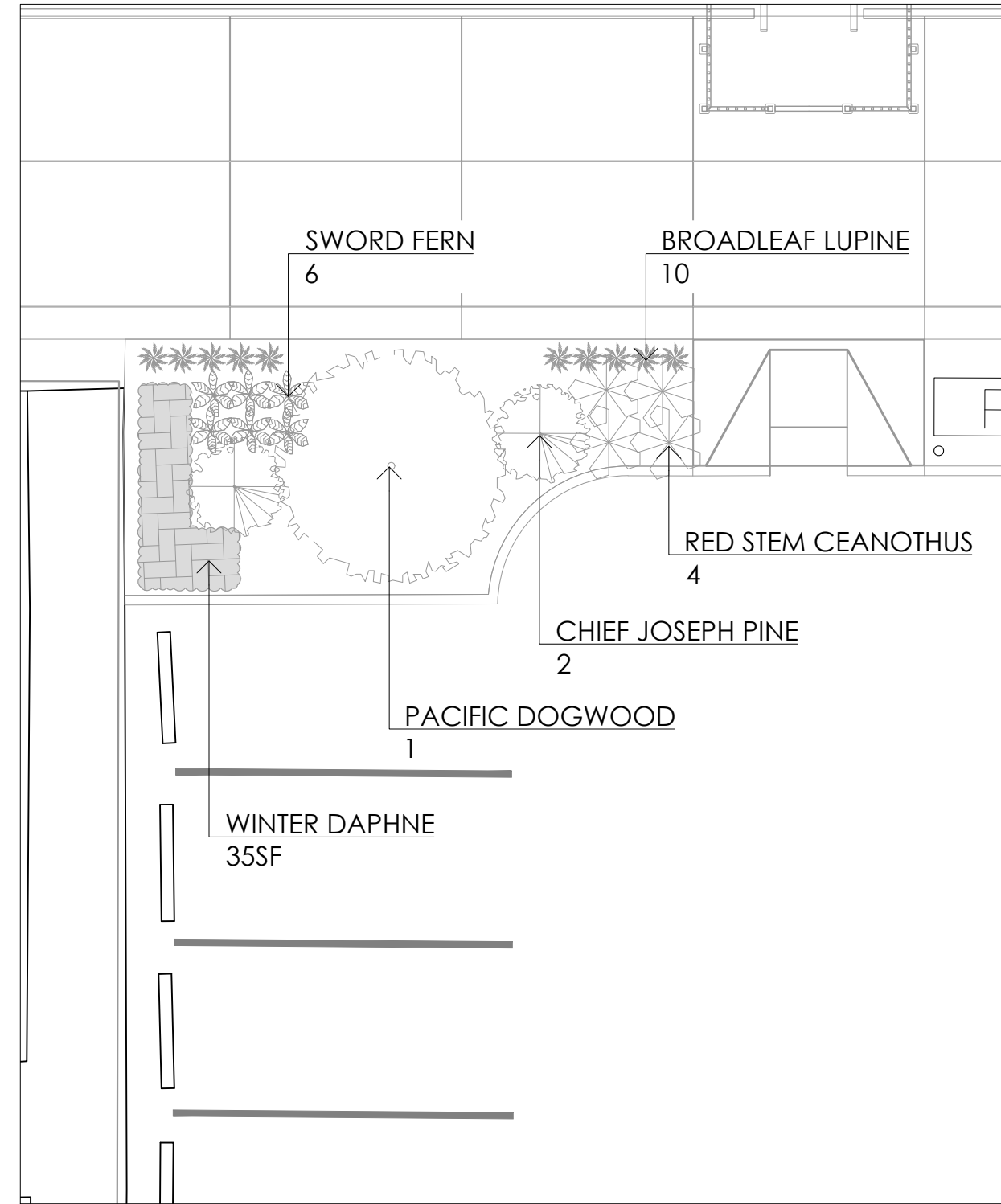
7 PLANTING AREA #7
1/8" = 1'-0"



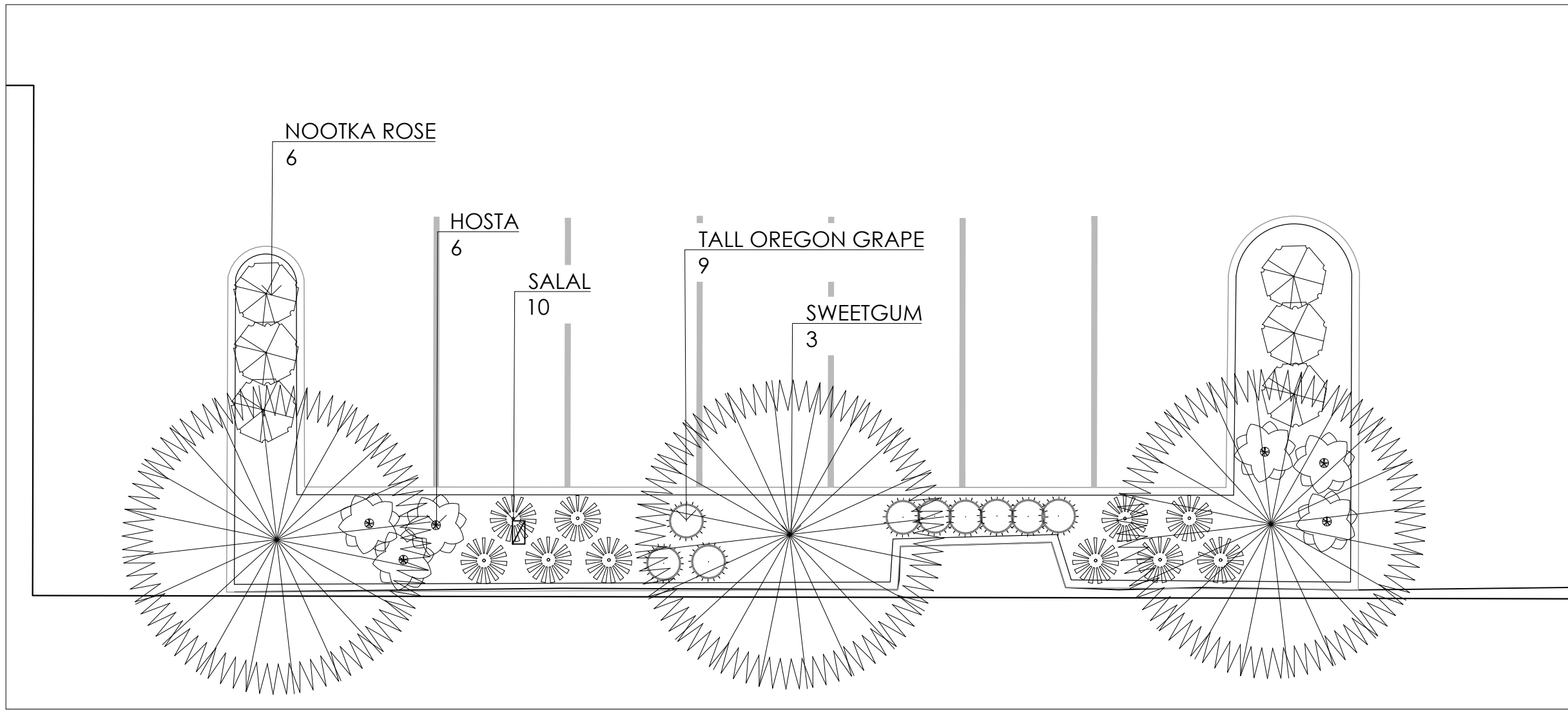
2 PLANTING AREA #2
1/8" = 1'-0"



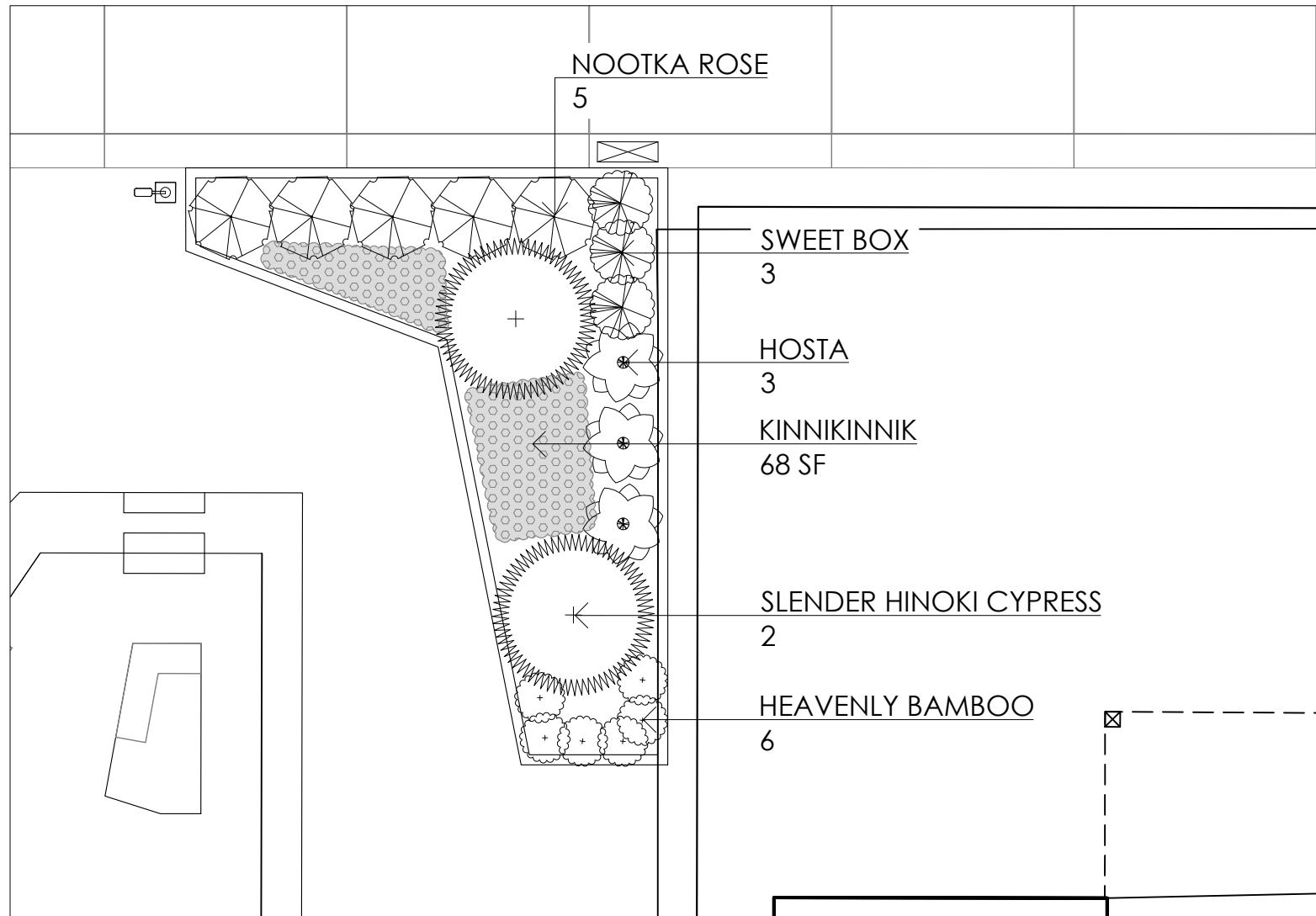
5 PLANTING AREA #5
1/8" = 1'-0"



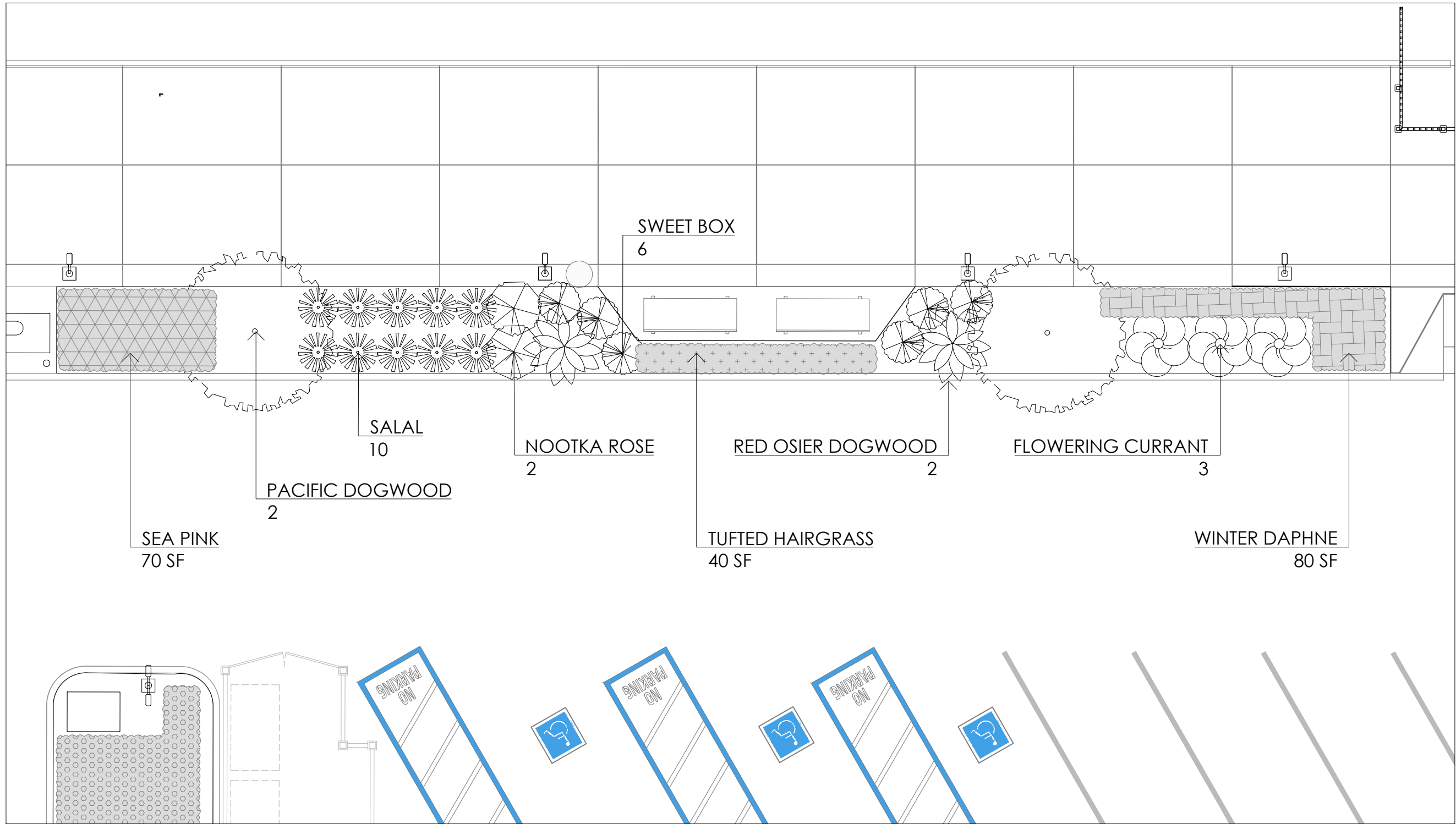
8 PLANTING AREA #8
1/8" = 1'-0"



3 PLANTING AREA #3
1/8" = 1'-0"

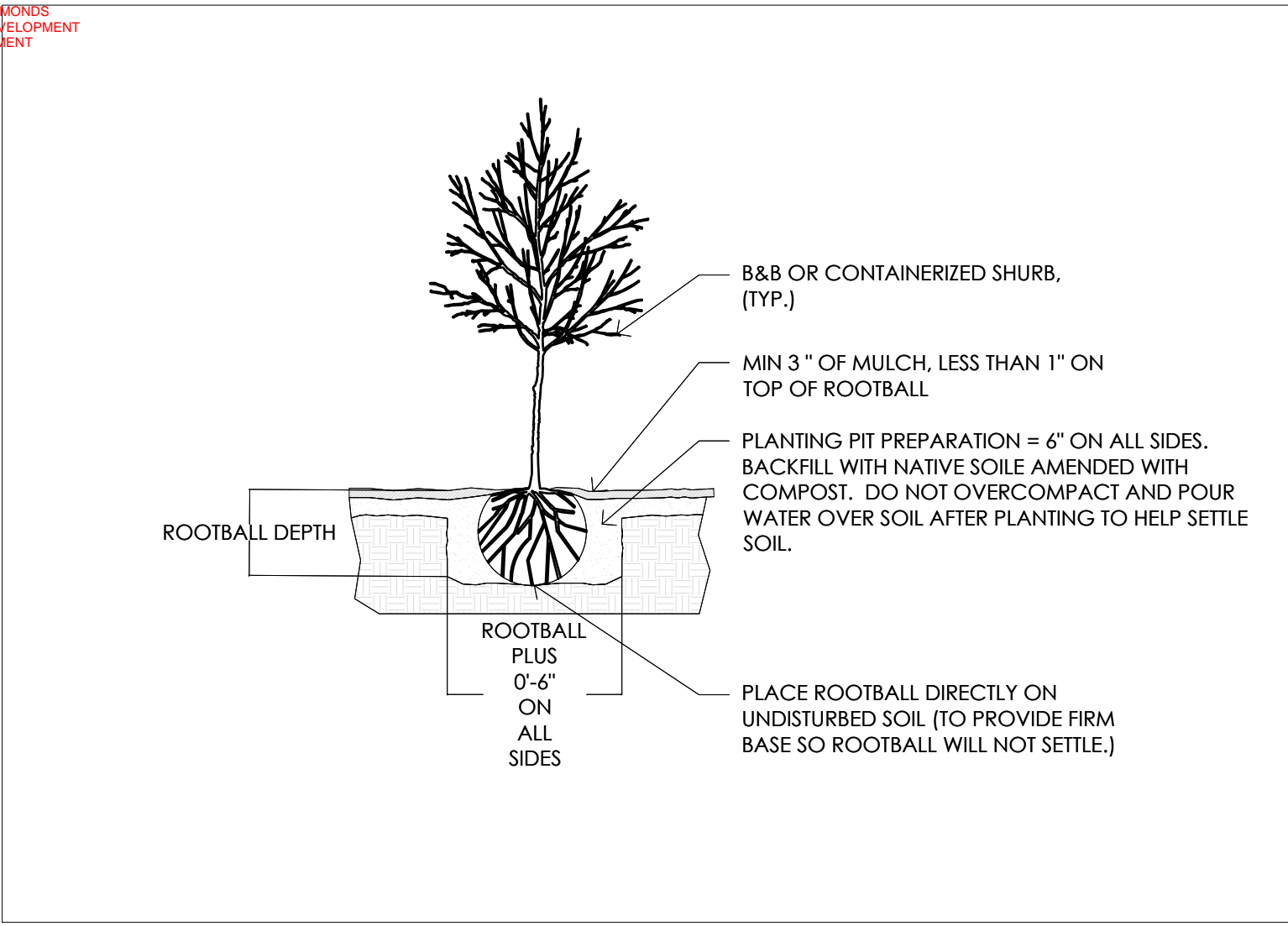


6 PLANTING AREA #6
1/8" = 1'-0"

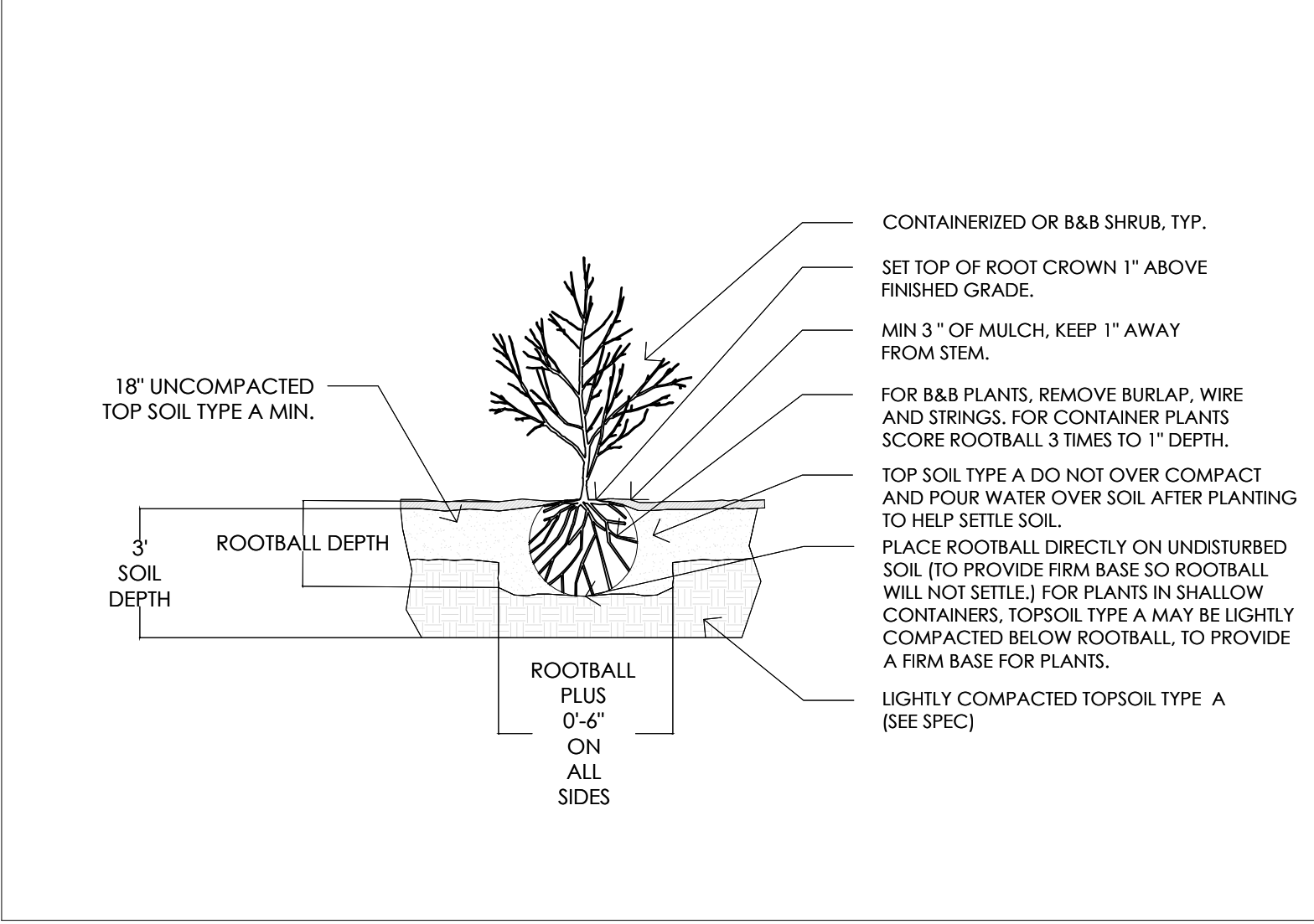


9 PLANTING AREA #9
1/8" = 1'-0"

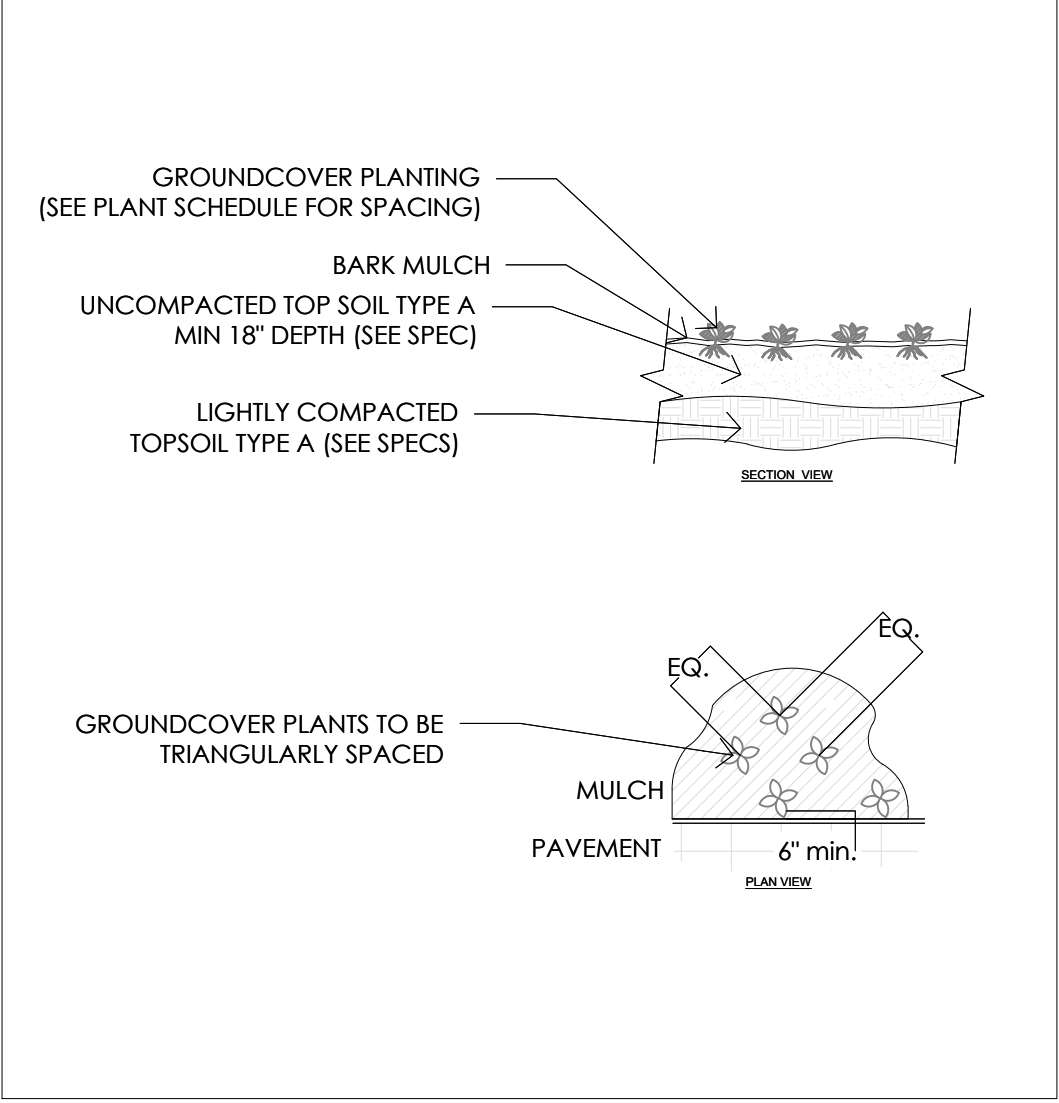
REVISIONS		2/9/23	MAKERS architecture • planning • urban design ADDRESS: 500 UNION ST. SUITE 700 SEATTLE, WA 98101 TEL: (206) 652-5080 FAX: (206) 652-5079	PORT OF EDMONDS NORTH PORTWALK AND SEAWALL RECONSTRUCTION 336 Admiral Way, Edmonds, Washington	DESIGNED: MM/YY	
					DRAWN:	
CHECKED:						
Project No. 2045				DRAWING TITLE PLANTING PLAN CALLOUTS 1 OF 2		NOTE: SCALES SHOWN ARE FOR 24"X36" SHEETS
Drawing No. UD07.2						
Sheet of						



1 TREE PLANTING
NTS

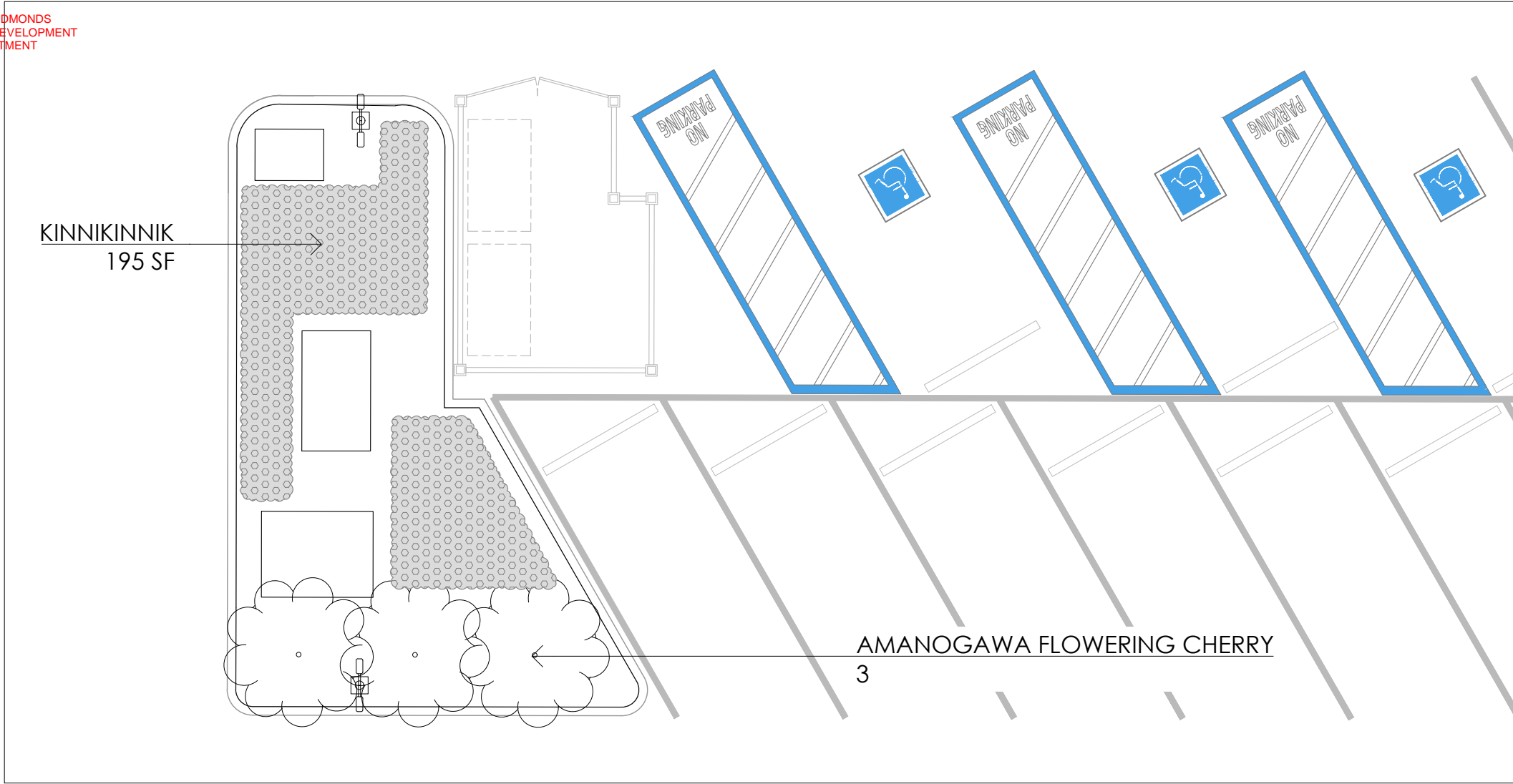


2 SHRUB PLANTING
NTS

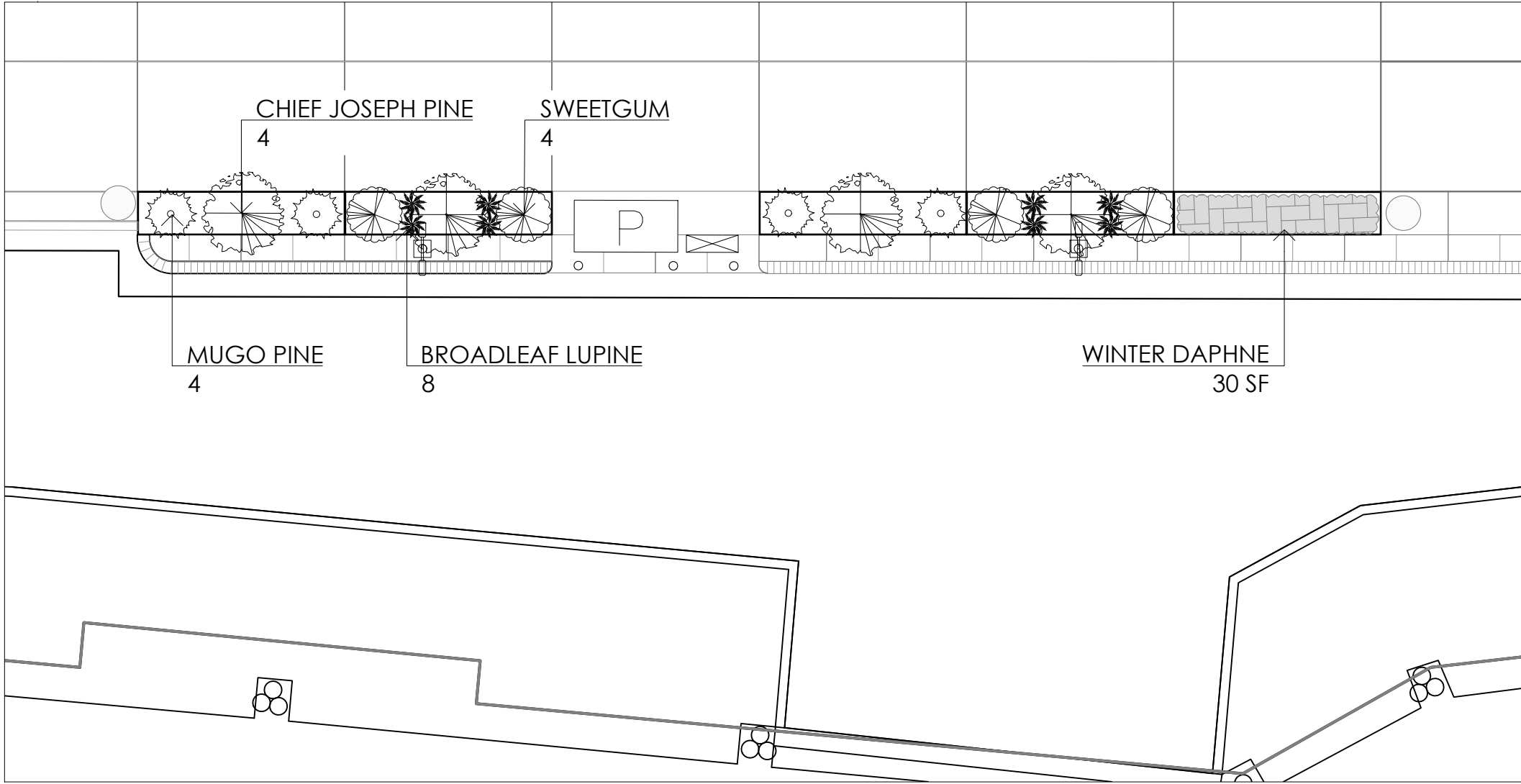


3 GROUNDCOVER PLANTING
NTS

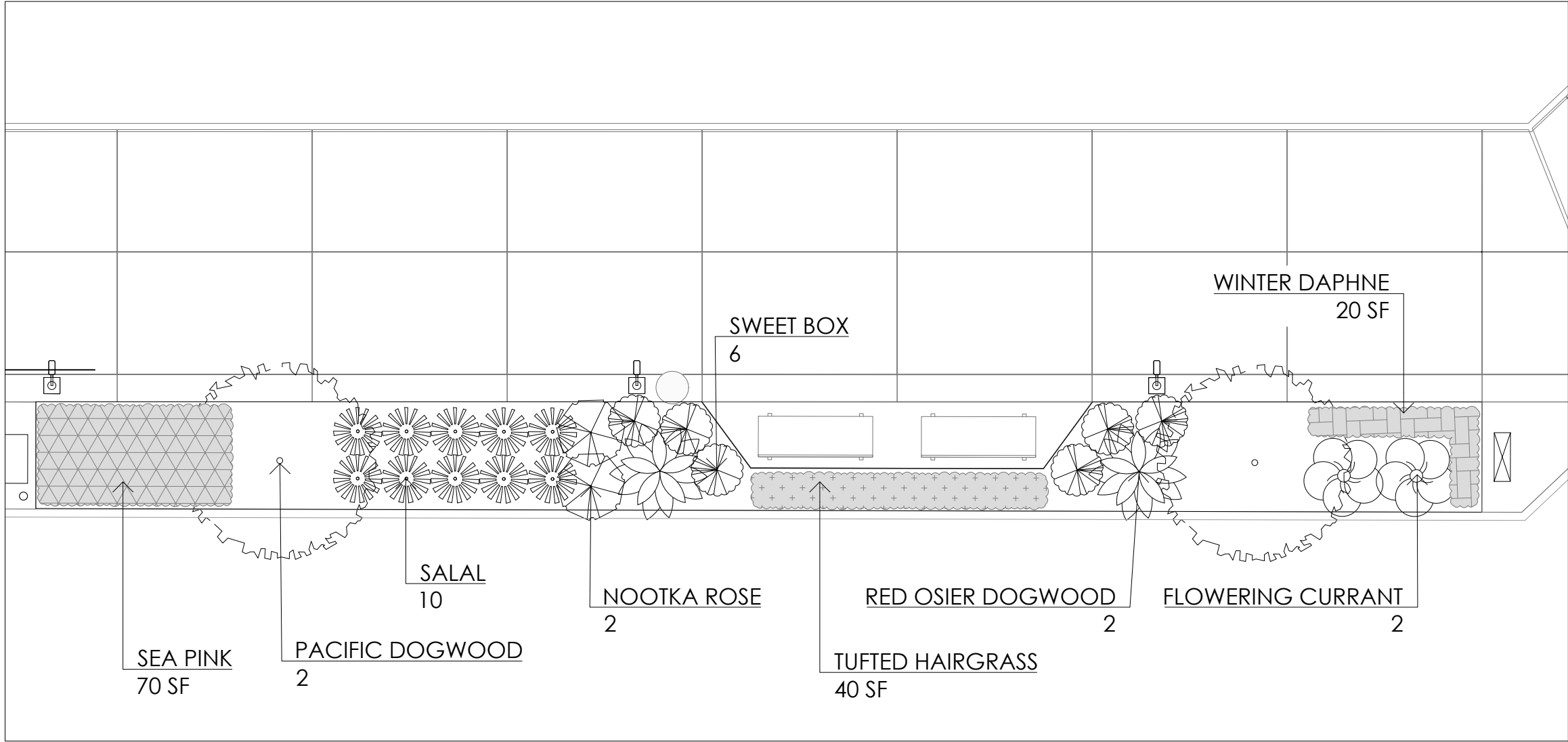
DESIGNED: MM/YY		DRAWN:		CHECKED:	
NORTH PORTWALK AND SEAWALL RECONSTRUCTION		DRAWING TITLE		NOTE: SCALES SHOWN ARE FOR 24"x36" SHEETS	
PORT OF EDMONDS		336 Admiral Way, Edmonds, Washington		PLANTING PLAN CALLOUTS 2 OF 2	
MAKERS		ADDRESS: 500 UNION ST., SUITE 700		2/9/23	
architecture • planning • urban design		SEATTLE, WA 98101			
		TEL: (206) 652-5080			
		FAX: (206) 652-5079			
REVISIONS		APPROVED			
DATE		DESCRIPTION			
Project No.		2045			
Drawing No.		UD07.3			
Sheet		of			



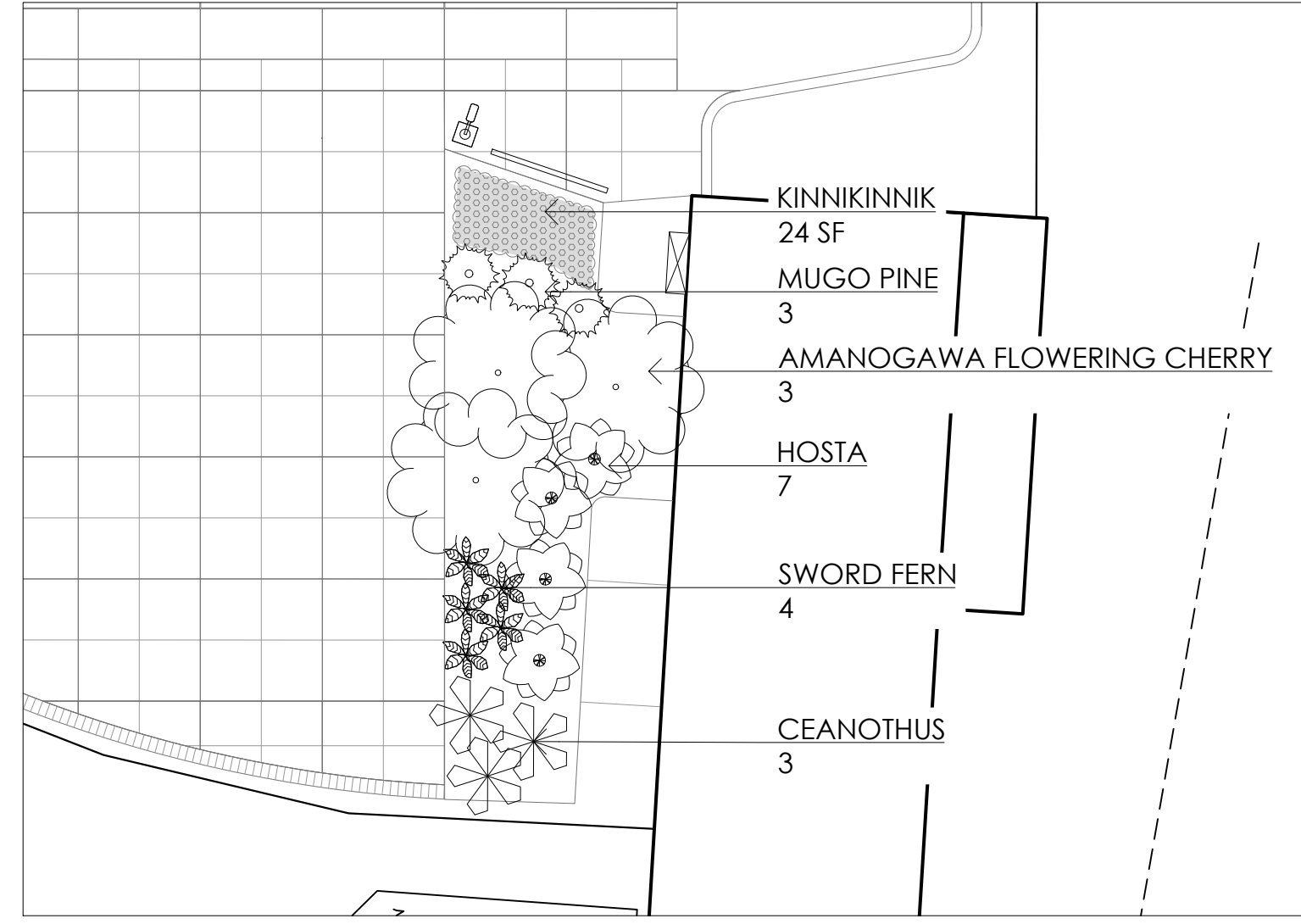
1 PLANTING AREA #10
1/8" = 1'-0"



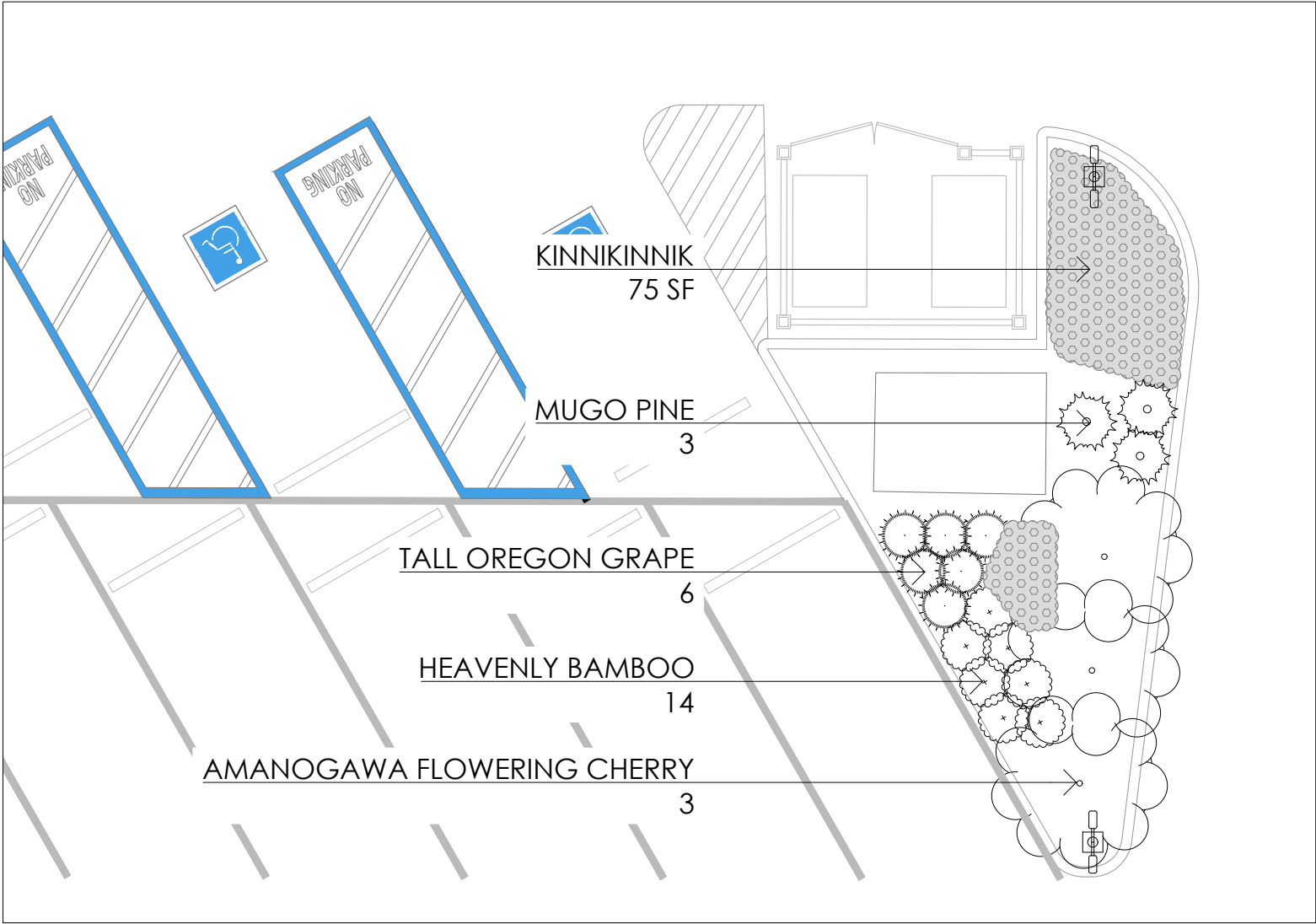
4 PLANTING AREA #13
1/8" = 1'-0"



2 PLANTING AREA #11
1/8" = 1'-0"



5 PLANTING AREA #14
1/8" = 1'-0"



3 PLANTING AREA #12
1/8" = 1'-0"

REVISIONS	DATE	DESCRIPTION	APPROVED
Project No. 2045			
Drawing No. UD07.4			
Sheet of			
DRAWING TITLE PORT OF EDMONDS NORTH PORTWALK AND SEAWALL RECONSTRUCTION 336 Admiral Way, Edmonds, Washington			DESIGNED: MM/YY DRAWN: CHECKED:
DRAWING TITLE PLANTING DETAILS			NOTE: SCALES SHOWN ARE FOR 24"x36" SHEETS

MAKERS

architecture • planning • urban design

ADDRESS: 500 UNION ST., SUITE 700
SEATTLE, WA 98101
TEL: (206) 652-5080
FAX: (206) 652-5079

2/9/23